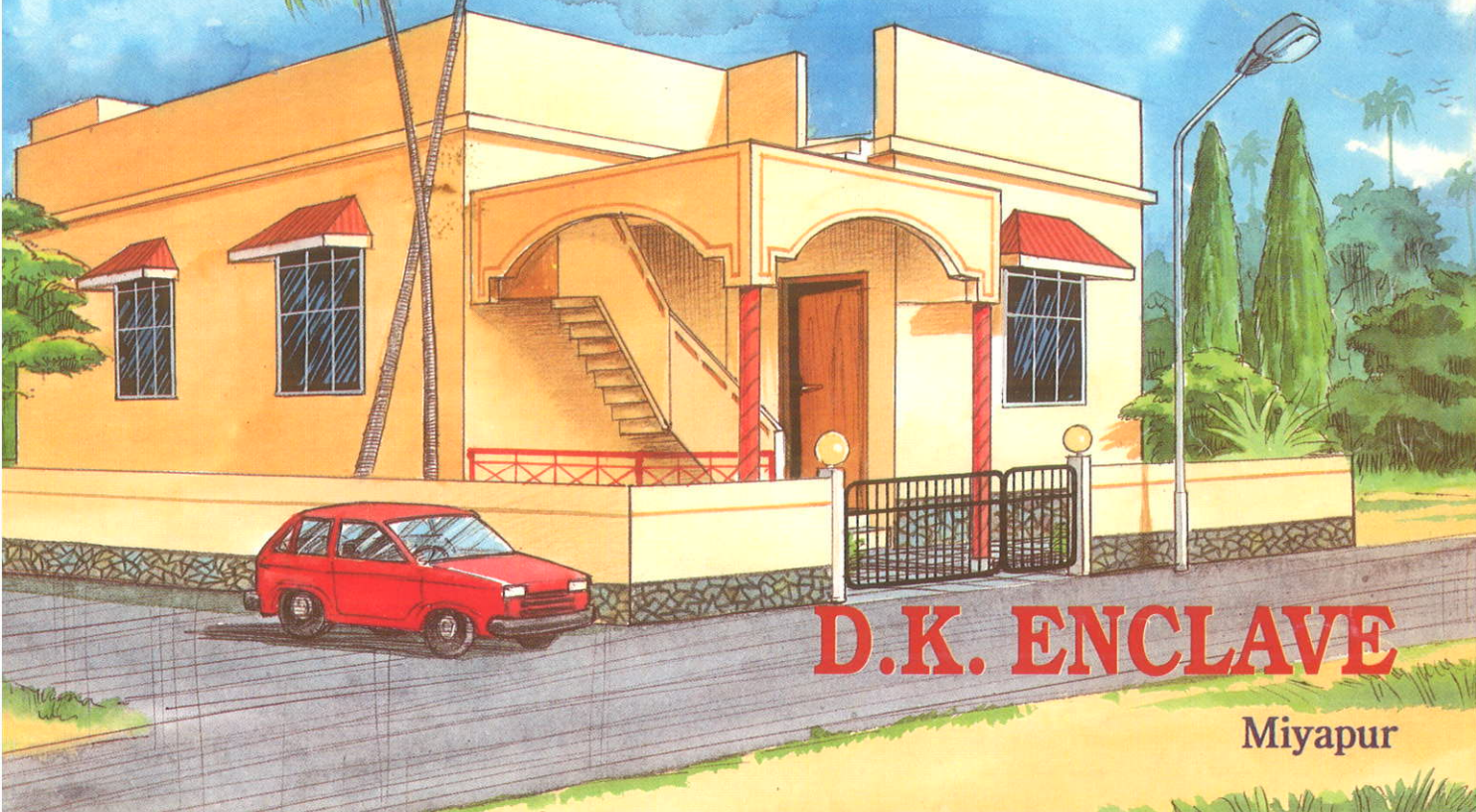


Possession

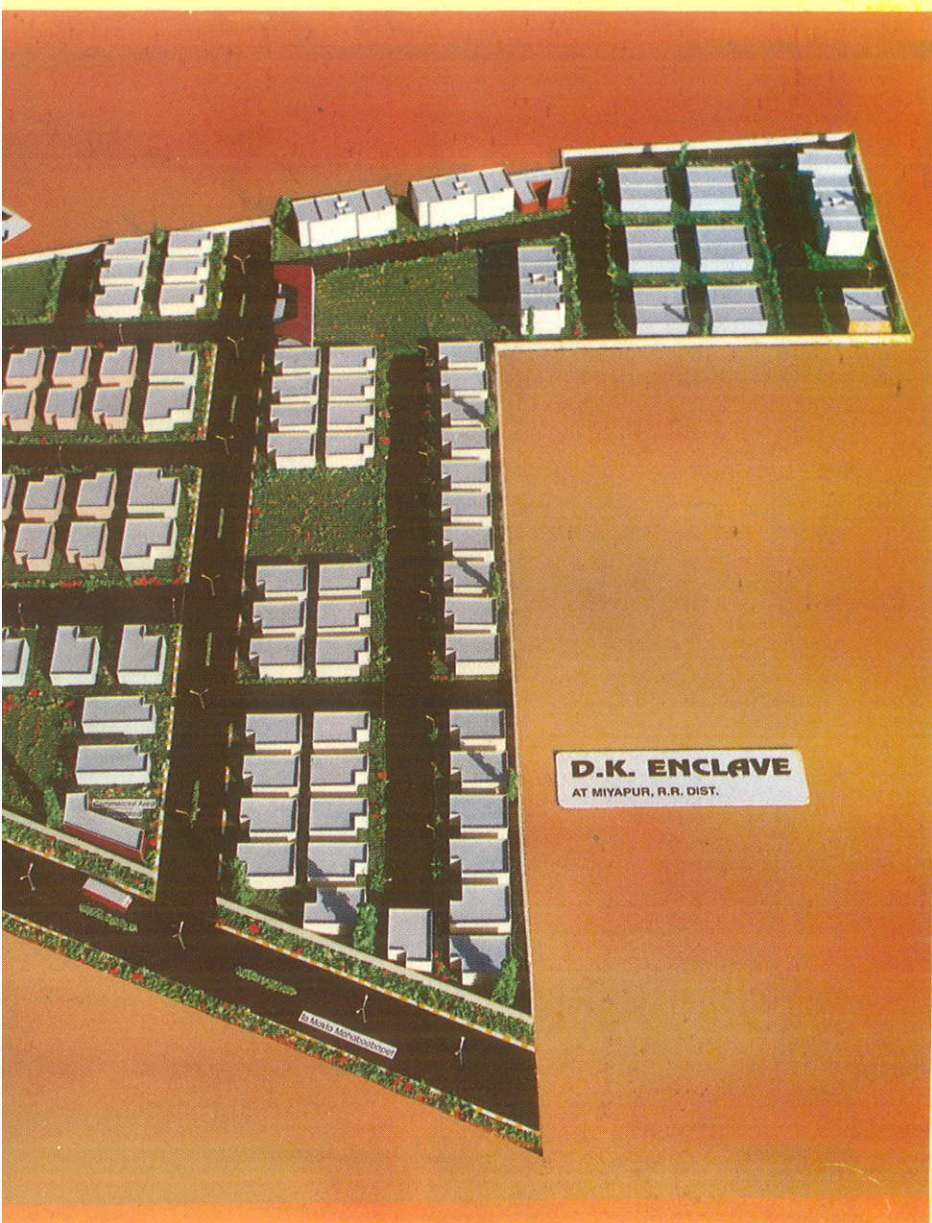


D.K. ENCLAVE

Miyapur

ENGINEERS

SYNDICATE LTD.



HIGHLIGHTS:

1. 8 Types of Independent houses as per vaasthu
2. All sides open for better ventilation.
3. Every individual house owner will have space for gardening.
4. Close to city with city telephone facility.
5. Pollution free atmosphere.
6. Frequent bus services.
7. Pillar construction with provision for expansion on sides and 2 floors.
8. Internal asphalt roads, avenue trees, street lights and dish antenna.
9. Provision for school, shopping complex, parks & bus-stop.
10. Clear title of land & HUDA approved layout with facility for loan from leading housing financial institutions.

When in preparation of this brochure, the promoters preserve their rights to make additions, alterations, amendments & changes of areas as may be necessary from time to time, provided on such terms as may be decided by the promoters at the same time of execution of the agreement for sale of the units.

fact by every passing day the city life in underabad is getting crowded and chaotic. **Prajay Engineers Syndicate Limited** has seen the new enclave close to the twincities. which will be away from the din and bustle and a place filled with peace and harmony.

is being promoted and built by the 1990 award winners **Prajay Engineers Syndicate** well known by now for providing houses on pockets for all classes of people. constructed not one but several flats and houses in and around the city, are now promoting low cost housing in other states too.

, is coming up at Miyapur. It offers you independent houses which will suit every requirement. D K Enclave, has got all the essential facilities within its vicinity.

Prajay Engineers Syndicate Limited, we assist you to obtain loans easily, since we are recognised by financial institutions. Where loan granting institutions do not assist you through chit linked schemes, our assistance is among our group concerns.

Our main objective is to provide a house for you that to at a reasonable cost with pollution free & with required civic amenities. Since, we want to keep its clients confined to a social class, it shall appreciate if any of its buyers or clients to maintain business ethos.

The project is spreadout over 40 Acres. of land with all modern facilities, coming up besides bus body building at Miyapur and it is quite far away from D K Enclave.

సాంత ఇల్లు తీరని కోరిక కాదు

మా ద్వారా ఎంతో సులభం

ఇందుకు సాక్ష్యం వందలాది కుటుంబాలే

ప్రాజే ఇంజనీర్స్ సిండికేట్ వారు ఎన్నో విజయవంతమైన అద్భుతమైన ప్రాజెక్టులను విజయవంతంగా పూర్తిచేసి నూతనోత్సాహంతో ఇప్పుడు **DK Enclave** అనే మరొక గొప్ప గృహనిర్మాణ పథకాన్ని మియాపూర్ నందు, రణగొణ ధ్వనులు, కలుషిత వాతావరణానికి దూరంగా, అతి ప్రశాంత వాతావరణంలో రూపుదిద్దుకొంటున్న ఈ నగరం అన్ని మూలల నుంచి ప్రయాణ సౌకర్యమేకాక సంసార జీవనమునకు కావలసిన ఏ రకమైన సదుపాయమునకు లోటు లేదు.

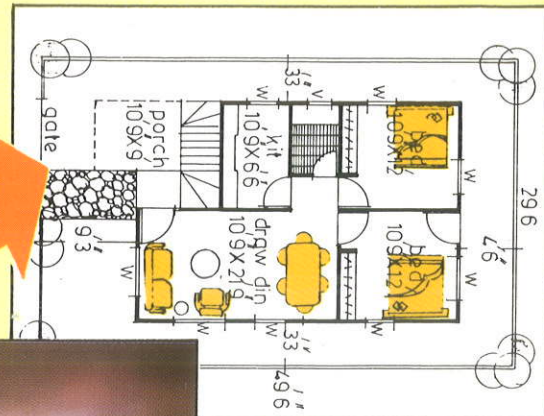
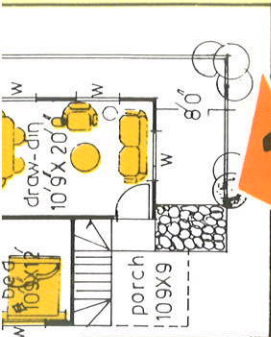
ఇందులోని ప్రతి ప్లాటు, చక్కని వాస్తుకళ ఉత్తమాభిరుచుల మేలుకలయిక, అటువంటి అందమైన ఇంటిని మీ సొంతం చేసుకోవడానికి మీరు పెద్ద మొత్తాన్ని, అనేక వాయిదాల్లో చెల్లించి ఇంటిని స్వంతం చేసుకోనే సదవకాశాన్ని ప్రాజే ఇంజనీర్స్ సిండికేట్ మీకు నేడు కల్పించుచున్నది.

గృహనిర్మాణ రంగంలో మంచి పేరు పొందిన ప్రాజే ఇంజనీర్స్ సిండికేట్ సంస్థను, యువ, ఔత్సాహిక, సాంకేతిక నిపుణులు క్రియాశీల వ్యక్తులు నిర్వహిస్తున్నారు. 1990 & 1991 ప్రాజే సంవత్సరములో ఇంజనీరు సిండికేట్ ఉత్తమ గృహనిర్మాణ సంస్థగా గుర్తింపబడి రాష్ట్ర గవర్నరు నుండి సి. ఐ. టి.డి. అవార్డును పొందినది. హెచ్.డి.యఫ్.సి. / ఎల్.ఐ.సి. / కెన్ ఫిన్ హోమ్స్ వంటి అన్ని రకాల ఆర్థిక సంస్థలు ఇంజనీర్స్ సిండికేట్ ను గుర్తించి రుణాల రూపమున ఆర్థిక సహాయాన్ని త్వరితగతిన అందించుచున్నవి.

అటువంటి ప్రాజే ఇంజనీర్స్ సిండికేట్ ఆందరికీ ఆందుబాటులో వుండే విధంగా వివిధ ధరలలో **DK Enclave** ప్రాజెక్టును నేడు నిర్మిసోంది. ఆర్థిక సంస్థల నుంచి ఋణసౌకర్యం మేకాక ప్రాజే చిట్ ఫండ్ పై, లిమిటెడ్ ద్వారా చిట్ సౌకర్యము కూడా ఏర్పాటు చేయబడును. హూడా అనుమతి లభించిన ఈ ప్రాజెక్టులో ఎటువంటి లొసుగులు, అవకతవకలు లేవు. ముందు మీరు చేయవలసిన పనుల్లో కేవలము 10,000/- రూపాయలు అడ్వాన్సుగా చెల్లించి ప్లాటును బుక్ చేసుకోవడమే, సంవత్సరము తిరిగే లోపల మీరు కలలుకన్న స్వంత ఇల్లు మీ కళ్ళ ముందుంటుంది.

Type A

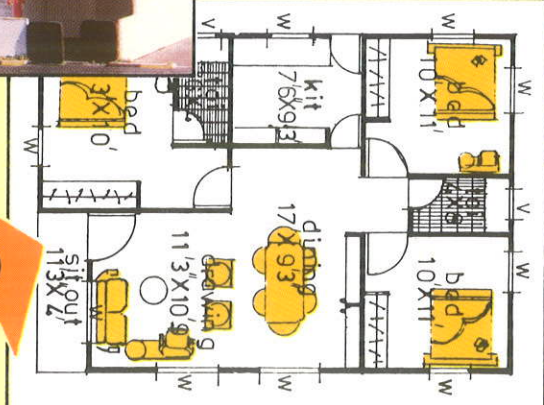
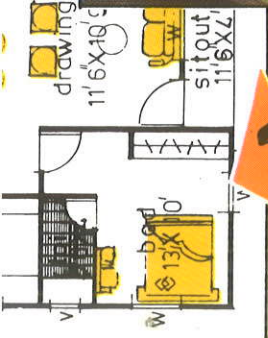
Type B



Land-162 Sq Yds.
Plinth Area-700 Sq Ft.



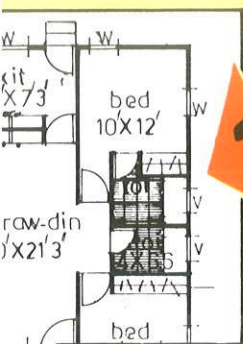
Land Area-270 Sq Yds.
Plinth Area-965 Sq Ft.



Type C

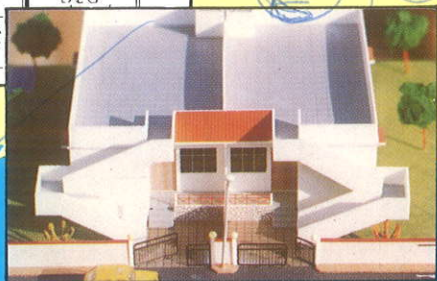
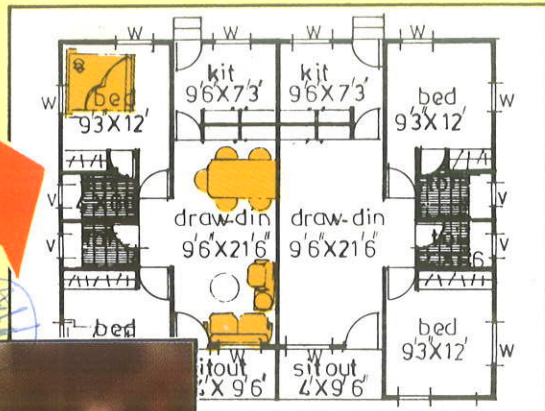
Type D

extended at extra cost wherever feasible.

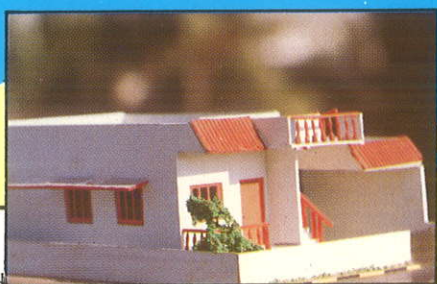


Type E

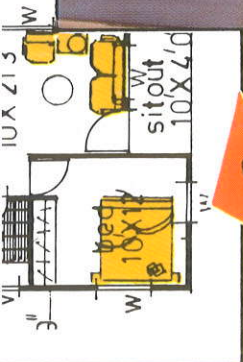
Type F



Land Area-157 Sq Yds.
Plinth-685 Sq Ft.

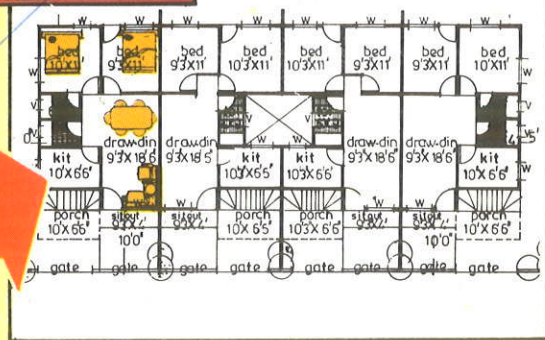


Land (G.F.) 77 & 63 Sq Yds.
Land (F.F.) 52 & 42 Sq Yds.
Plinth (Corner) 710 Sq Ft.
Plinth (Middle) 690 Sq Ft.



Type G

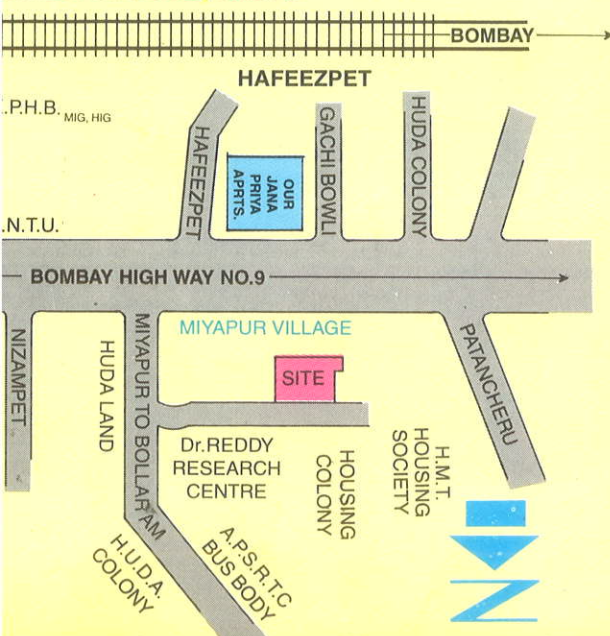
Type H



tended at extra cost wherever feasible.



N MAP OF D K ENCLAVE



SPECIFICATIONS:

- Foundation** : R.C.C. Footings (1:2:4)
- Basement** : Solid cement blocks in CM (1:8)
- Column & Beams** : R.C.C. (1:2:4) Mix
- Walls** : *4" thick outer wall in solid cement brick*
- Flooring** : Grey mosaic with skirting. *high and 4" thick*
- Doors** : *inner walls in half brick*
A.T. Wooden frames with flush door shutters
- Windows** : Steel frames & shutters with glass panels
- Kitchen** : Black polish stone cooking platform with built-in sink. Glazed tiles upto 2'0" height over the platform.
- Toilets** : Toilets will be provided with Indian W.C. and shower area.
Walls will be finished with glazed tiles to a Suitable Height.
- Electrical** : Concealed wiring will be provided with requisite no. of points.
- Painting** : Internal walls with O.B.D - External walls with Snowcem, doors & windows with enamel
- Additional facilities:** Any additional facility other than specified above, like ~~staircase~~, portico, *shelves* and ~~wall with gate~~ will be provided at extra cost.
lefts, ① compulsory compound wall at an extra cost

Note: This is not A Prospectus. This Information in this Brochure is for private purpose only.

DIRECTOR'S BACKGROUND

D S CHANDRA MOHAN REDDY

Managing Director

With a humble beginning 12 years ago in construction field, **Mr. Reddy** along with his trusted staff has successfully completed several major housing complexes in and around the twin cities. He has also been instrumental in their company getting the **CITD** award twice in 1990 & 1991. With vision and imagination coupled with dynamism he has been able to diversify the company into various fields, which has made him the main pillar of all the group of companies. He successfully manages a large mechanised road and bridge-building construction company for which they have their own specialised equipment.

At present, major road projects are in progress. He has already worked out schemes successfully for building cottages at Shamirpet and a family club **The Retreat** at Bowenpally. He is currently directing the construction of several multistoried flats & independent houses in and around the twincities.

D. VIJAY SEN REDDY

Director

Director of the organisation from the inception looking after all activities of construction apart from his specialised profession as Chartered Accountant. He is the backbone of all the ventures undertaken, ever conscious of company's growth. He has worked out different financial packages to reduce the burden for the flat buyers, which has promoted people to utilise his schemes to their benefit. Manages a very successful limited company dealing in public Deposits, Leasing and Hire-Purchase, which will be going for a Public Issue in near future. He also heads a Chit Fund Company, Poultry farm and an outdoor Advertising Company. He is also fully involved in the other activities being promoted by the group concerns.

Projects Under Progress

- **JANAPRIYA APARTMENTS**
2nd Phase: Miyapur
(250 Flats)
- **MOONROCK APTS.**
Masabtank (72 Flats)
- **HIDDEN TREASURE APTS.**
Somajiguda - **Delux Flats**
(68 Flats)
- **SAROJINI CHAMBERS**
Chikkadpally - Commercial
Complex & 15 Flats
- **S.L.N.APARTMENTS**
Sankar Bagh (48 Flats)
- **RADHADEVI APTS**
Ramanthapur (40 Flats)
- **MUNAWAR CHAMBER**
Commercial Complex
Raj Bhavan Road
Somajiguda
- **B.K. ENCLAVE**
(800 Independent houses)
Miyapur
- **COUNTRY HOMES**
(Farm Houses)
Shamirpet
- **RETREAT POINT**
(Commercial Complex)
R.P.Road
Secunderabad
- **SAI NIKETAN**
Tilak Road (24 Flats)
- **SHANTI NILAYAM**
Narayanaguda (20 Flats)
- **V M ARCADE**
Sarrornagar

ment club " **The Retreat** " on 8 acres of land is coming up shortly at Bowenpally.

Builders

ERS
ATE LTD.

ud
0 001
99310,240752.

olony)

gineer

derabad



janapriya
700 Flats Township
already built by us near Miyapur

BIRDS VIEW OF THE TOWNSHIP



HIDDEN TREASURE APARTMENTS



PIONEER CHAMBERS